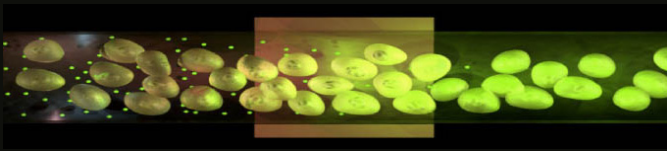




MaxCyte[®] STX[™]
SCALABLE TRANSFECTION SYSTEM



Transfection to the N^{th} Power.
Any Cell. Any Molecule. Any Scale.[™]



Transfection Capabilities

Any Cell

Primary Cells
Stem Cells
Cell Lines
Difficult-to-Transfect Cells

Any Molecule

DNA
RNA, mRNA, siRNA
Proteins
Cell Lysates

Any Scale

Basic Research
Assay Development
Large-scale Screening and Production
Pre-clinical & Clinical Manufacturing

How will you use the *Power* of the MaxCyte STX Scalable Transfection System?

Fully Scalable Cell-based Assays

Produce the cells you need, at the scale you want.

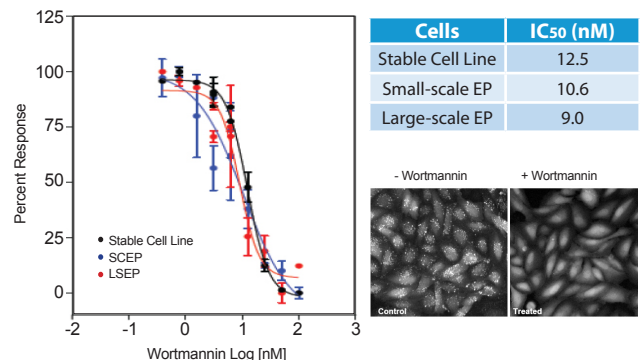
From cell lines to primary cells, the MaxCyte STX produces quality cells with high levels of cell viability and transfection efficiency ideal for use in cell-based functional assays. Seamlessly scale up your research using MaxCyte patented flow electroporation for transfection of up to 1×10^{10} cells in less than 30 minutes without further assay optimization or a loss in transfection performance.

Rapid Protein Production

Produce the type of protein you need, in the cells you want.

MaxCyte transfection enables prolonged expression of a variety of proteins including antibodies, secreted proteins, membrane-associated proteins, and viral vectors. Using transfection protocols developed for high level protein expression, the MaxCyte STX can efficiently produce proteins in commonly desired cell types such as CHO, HEK, and insect cells. This platform allows for rapid, cost-effective protein production and offers a practical solution to the time and labor challenges faced when relying exclusively on stable cell lines.

High Content PI3K Assay



High Content, PI3 Kinase Assay. Cells were transfected with eGFP-2XFYVE (tandem PI3P binding domains fused to eGFP) using small-scale (SCEP) or large-scale (LSEP) electroporation. Transfected cells or cells stably expressing eGFP-2XFYVE were incubated for 30 minutes with wortmannin, a PI3 kinase inhibitor. Active PI3 kinase leads to localization of GFP to endosomes and visualized as granules, while PI3K inhibition leads to redistribution of fluorescence. No significant differences in wortmannin IC₅₀ values were observed between the three cell populations.

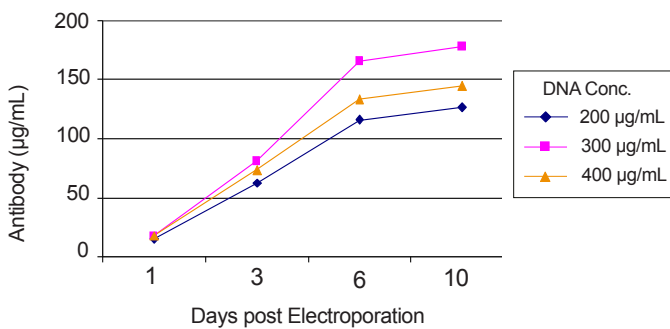
MaxCyte Scalable Transfection - up to 1×10^{10} cells

Imagine a single transfection system that meets all your transfection needs - *Any Cell, Any Molecule, Any Scale.*

The MaxCyte[®] STX[™] Scalable Transfection System uses next generation flow electroporation to reproducibly and cost-effectively produce the number and type of cells your research requires. Cell lines, primary cells, stem cells and other difficult-to-transfect cells can be transfected with high levels of cell viability and transfection efficiency. The MaxCyte STX allows you to rapidly perform assay development, high throughput screening (HTS), high content screening (HCS), protein production, or an infinite number of other innovative applications. Explore the ways the MaxCyte STX can help open the doors to improving the quantity and quality of your drug candidates and biologics by:

- Increasing productivity with lower operational costs
- Performing more physiologically relevant assays
- Implementing new cellular systems and assays rapidly
- Reducing reliance on stable cell lines

CHO-based Antibody Production



Extended Production of Antibodies from MaxCyte Transfected CHO Cells. Cells were transfected with an equimolar mixture of heavy and light chain expression plasmids with a total DNA concentration of 200, 300, or 400 µg/mL on day 0. Total IgG concentration in cell supernatant was measured using an ELISA on days 1, 3, 6, and 10.

Applications

Cell-based Screening Assays

GPCRs
Ion Channels
Nuclear Receptors
Kinases
Reporter Gene Assays

Protein Production

Antibodies
Recombinant Proteins
Viruses & VLPs

Cellular Engineering

Stable Cell Line Generation
Cell Modification

MaxCyte STX Scalable Transfection System

- • • High quality (co)transfection of DNA, mRNA, siRNA, proteins and whole cell lysates
 - Cell viability rates >95% for commonly used cells
 - Transfection efficiencies >90%
 - Able to transfect large plasmid DNA
- • • Fully scalable transfection
 - 5×10^5 - 4×10^7 cells in seconds using static electroporation
 - Up to 1×10^{10} in <30 minutes using flow electroporation
- • • Easy to use, benchtop instrument
 - Pre-loaded with a library of validated, cell type-specific electroporation protocols
 - cGMP compliant, CE marked, ISO 9001 certified
 - Computer-controlled, sterile system



'The flexibility, scalability and ease of use of the MaxCyte STX translate into shorter times to screen, higher quality assays and improved physiologic relevance.'

Toll Free: 1.877.MAXCYTE (1.877.629.2983)
Tele: 1.301.944.1700
Fax: 1.301.944.1703
info@maxcyte.com

MaxCyte, MaxCyte STX and Any Cell. Any Molecule. Any Scale. are trademarks of MaxCyte, Inc.

 **MaxCyte**[®]

MaxCyte, Inc
22 Firstfield Rd., Suite 110
Gaithersburg, MD 20878

www.maxcyte.com

© MaxCyte, Inc 2011. All rights reserved.